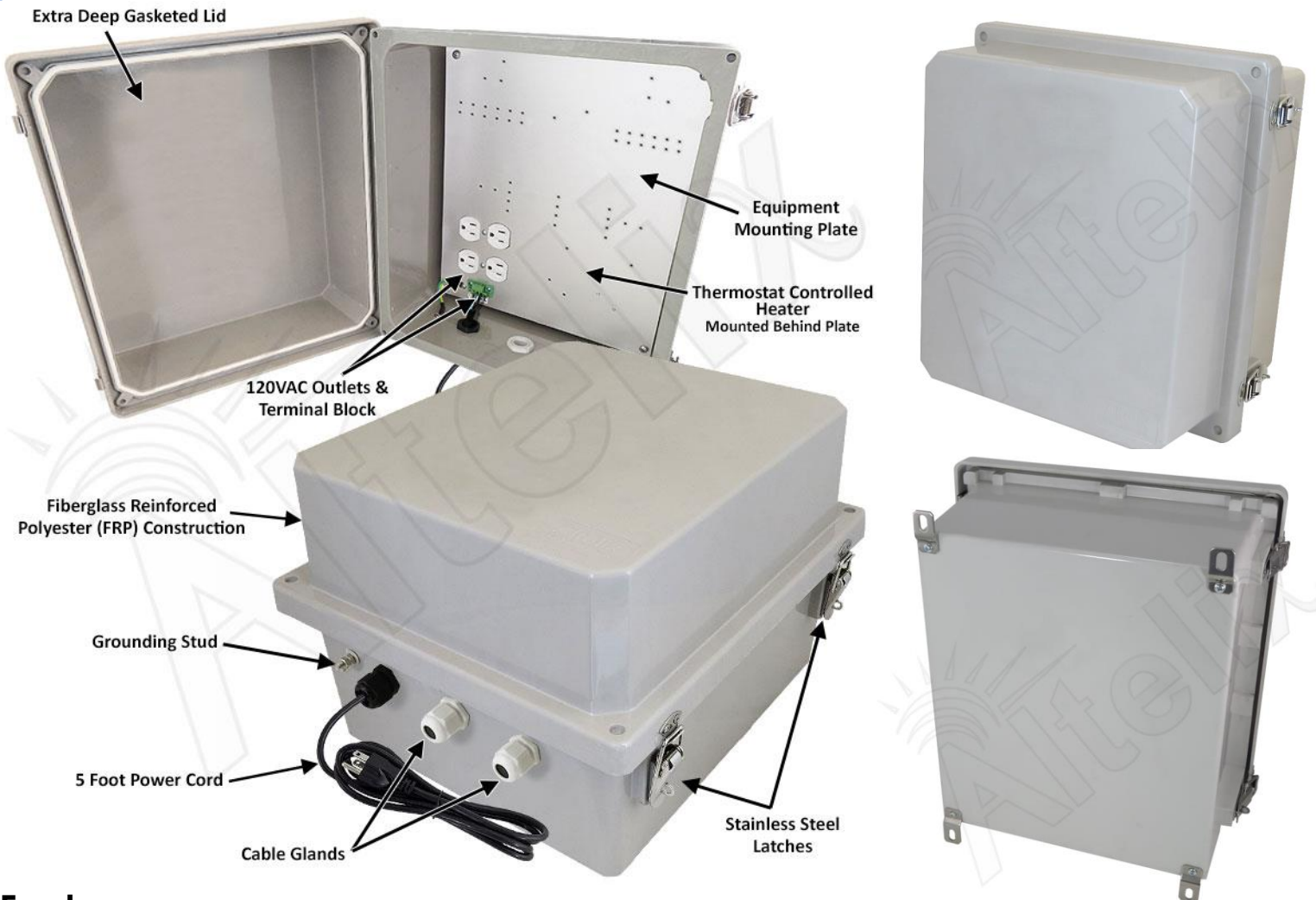


14x12x10 Fiberglass Weatherproof Heated NEMA 4X Enclosure with 120 VAC Outlets, Power Cord & 200W Thermostat Controlled Heating System



Features

- Thermostat Controlled 200W Heating System
- No Electrical Wiring Required
- (4) Pre-Wired 120VAC Outlets
- Pre-Wired 5 Foot Power Cord with Removable 120VAC Terminal Block
- Aluminum Equipment Mounting Plate
- Extra Deep Extended Lid for Increased Equipment Clearance
- Stainless Steel Hinges with High Quality 316 Steel Hinge Pins
- Stainless Steel Quick Release Latches with Padlock Hasps
- Fiberglass Reinforced Polyester, FRP
- Weatherproof, UV Stable and Highly Corrosion Resistant
- Meets NEMA 1, 2, 4, 4X, 12, 13 and IP65, IP66
- Includes Cable Glands and Stainless Steel Mounting Feet
- RF Transparent Enclosure
- Pole Mounting Kit Available

Description

The **Altelix NF141210HA1C** Heated NEMA Enclosure is ideal for rapid deployment because no wiring is required. Simply mount the enclosure and plug the pre-wired 5 foot power cord into a nearby outlet. The aluminum equipment mounting plate features four pre-wired 120VAC power outlets for your equipment.

Get your project up and running quickly and transition to hard-wired later if needed. The power cord can be easily removed, and the quick-connect terminal block simplifies hard-wiring by a qualified installer.

200W Thermostat Controlled Heater - This enclosure is equipped for harsh weather and cold environments. It features a thermostat controlled 200W heating system. The heater turns on when the internal temperature reaches 43°F (6°C) and turns off when it rises to 59°F (15°C). The heater is mounted below the equipment plate and wired internally so leaves the interior space and power outlets available for your equipment.

Extreme Protection Built to Last - This rugged JIC style NEMA box is molded from durable UV stable and corrosion resistant fiberglass reinforced polyester (FRP) with a UL94-5V flame rating. The FRP material is dent-proof, non-conductive and RF transparent for compatibility with wireless equipment. It can be easily drilled and modified by the installer as needed. It features a gasketed door with stainless steel continuous hinge and stainless steel quick release latches with padlock hasps.

Increased Interior Space - The NF141210 series enclosures feature an extra deep lid, almost 2 inches deeper than our NF141208 series enclosures. With the generous size of this enclosure and extended lid the NF141210 can accommodate a wide range of equipment.

Specifications

Material	Fiberglass Reinforced Polyester
Color	Gray
Voltage	120VAC
Max Load	10A @ 120VAC
Heater Turn-On Temperature	43°F (6°C)
Heater Turn-Off Temperature	59°F (15°C)
Heater Power	200 Watts
Terminal Block Wire Range	12-18 AWG
Terminal Block Wire Strip Length	6-7mm
Outer Dimensions	15.7 x 13.8 x 10.7 Inches (401 x 352 x 271 mm)
Inner Dimensions*	13.0 x 11.0 x 8.7 Inches (330 x 279 x 222 mm)
Mounting Plate Material	0.10 in (2.5 mm) Aluminum
Mounting Plate Dimensions	10.9 x 12.8 in. (276 x 324 mm)
Weight	13.3 lbs. (6.0 kg)
Power Cord Length	5 Feet (1.5m)
Ratings*	NEMA Type 4, 4X / IP66
Flame Rating	UL94-5V

*Notes

1) Enclosure ports must be properly sealed to maintain NEMA Type 4, 4X / IP66 rating.

2) See drawing for detailed dimensions of maximum space available for equipment.