



## NPD-Switched PDU series

**NPD-MR8: Switched 1U 19" PDU, 15A Load, 8 x NEMA 5-15/20R Outlets**

**NPD-MV16: Switched 0U Vertical PDU, 20A load, 16 x NEMA15/20R Outlets**

**More information:**

**[WWW.NIVEOPROFESSIONAL.COM](http://WWW.NIVEOPROFESSIONAL.COM)**

**[INFO@NIVEOPROFESSIONAL.COM](mailto:INFO@NIVEOPROFESSIONAL.COM)**



# Introduction

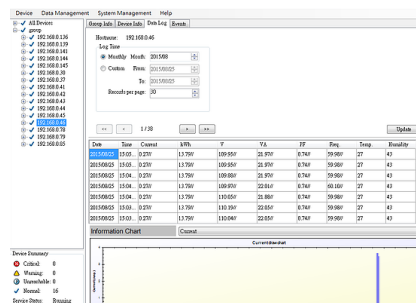
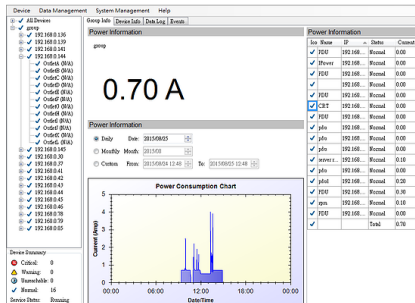
Niveo Professional Power Distribution Units facilitate the control and monitoring of the power in your network. The NPD Switched PDU series allows remote switching (on and off) to each outlet and configuration of power-on delays via sequential switching. The total load current, status of outlets can be monitored-and an alarm may be sent when a predefined threshold is exceeded. Niveo Professional PDU's come with a free bundle of monitoring software, allowing optimal remote service and contributing to energy saving protocols.

## True RMS Current Meter

To get accurate current

## Power monitor

The NPD PDUs can monitor, Total Current by Meter. It can be accessed over Web and SNMP. A free monitoring software tool is included.



## Protocols

The NPD-MR8/MV16 uses following protocols: Http, Https, SNMP, DHCP, UDP.

## Outlet Control

All outlets of the PDU can be controlled individually

## Power Delay

Sequence of Power On/Off can be pre-defined.

## Alarm Thresholds

User defined Alarm thresholds for Warning and Overload

## Event Alert

Event alert by Email, Trap, Audible alarm



## Technical Specifications

Model Name	NPD-MR8	NPD-MV16
Output	8 x NEMA 5-15/20R	16 NEMA 5-15/20R
Input	IEC 320 C20 Inlet IEC 320 C19 to NEMA 5-15P power cord , 3 meters	
Protection:	15 AMP Circuit Breaker	20 AMP Circuit Breaker
LED Indicators	SSL: 1 Yellow LED DHCP: 1 Green LED Output Status: 8 Green LED	SSL: 1 Yellow LED DHCP: 1 Green LED Output Status: 16 Green LED
Network Port	1 RJ45	
Current Meter	3 Digits Seven Segments for True RMS Meter Range:0A~20A Resolution: 0,1 A Precision: +/- 2% +/- 0,1AMP	
Nominal Voltage	115V	
Voltage	100V~127V full range	
Dimensions	(LxWxH) 90 x 432 x 44 mm (3.5 x 17 x 1.7 Inch)	(LxWxH) 56 x 1245 x 44 mm (2.2 x 49 x 1.7 Inch)
Weight	2kg (4.4lb)	4 kg (8.8lb)
Operating Temperature	32 to 102 F	
Max. Output Current	15 Amp (UL derated 12 Amp)	20 Amp (UL derated 16 Amp)
Humidity	0~ 90% RH (non-condensing)	
Certifications	FCC, c-UL-us, CE, UL, ROHS	