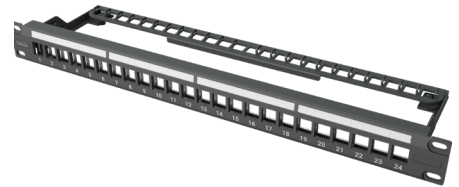


Technical Data Sheet

PRO Modular Keystone Patch Panel

The Kordz PRO Modular Keystone Patch Panel is a professional grade, shielded 24-port modular panel engineered for seamless integration with Kordz keystones. Its powder-coated metal frame with durable polycarbonate faceplate ensures long-lasting performance, while the optimised design enables hassle-free installation in professional rack environments. Shielded for consistent signal integrity, this 1U panel minimises electromagnetic interference (EMI) for reliable connectivity. Supplied with all required screws, the PRO Patch Panel is the robust and convenient solution for structured cabling projects, completing a Kordz networking ecosystem that's Connectivity Assured.

- Professional-grade 1U, 24-port modular keystone patch panel
- Powder-coated metal frame with durable polycarbonate faceplate
- Optimised for Kordz PRO and PRS keystones for seamless compatibility
- Shielded design with grounding wire included for consistent signal integrity
- Includes all required screws for quick and easy installation
- Ideal for high-density rack setups in residential and commercial environments



Technical Specifications	
Features	
Port Count	24 ports
Mounting Compatibility	1 rack unit (1U), 482.6mm / 19in x 44.45mm / 1.75in
Installation Environment	Indoors
Suitable Keystone Form Factor	Any standard keystone (in accordance to EIA-310-D)
Panel Shielding	Shielded (grounding wire must be attached)
Mechanical	
Panel full length	44.2mm 1.74in
Panel full width	482mm 19in
Panel full depth	125.2mm 4.93
Management Bar length	126mm 4.96in
Management Bar width	434.95mm 17.12in
Operating Temperature	-10° to 60°C
Storage Temperature	-40° to 70°C
Panel Weight	0.51kg
Management Bar Weight	00.2kg
Minimum Recommended Rack Depth	126mm
Grounding Wire	18AWG stranded copper w/ PVC insulation, green/yellow, 440mm
Patch Panel Material	SPCC with black powder coating, durable PC faceplate
Keystone Mounting Plate Material	SPCC with zinc plating
Management Bar Material	SPCC with black powder coating

Part No	Size	Maximum Capacity	Packaging Style	Unit Packaging Dimensions (mm/in)	Carton Quantity	Carton Dimensions (mm/in)
T2P00B-124S-BK	1U	24 Port	Brown box	510 x 70 x 60 20.1 x 2.76 x 2.36	15 pcs	526 x 338 x 235 20.7 x 13.3 x 9.25