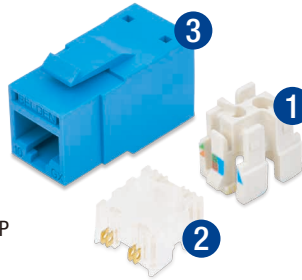


BELDEN

Installation Guide REVConnect UTP RJ45 (Jack or Plug)

Materials

1. REVConnect Cable Manager
2. REVConnect Termination Cap
3. REVConnect UTP Jack Interface (or REVConnect UTP Plug Interface)

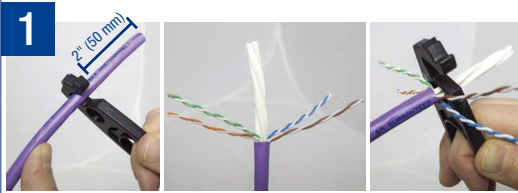


Tools

- | | | |
|-----------------------------------------------|------------------------------------------------|----------------------------------------|
| RVUTT01
REVConnect Termination Tool | RVUTB01
REVConnect Blade Replacement | AX101185
Belden Release Tool |
|-----------------------------------------------|------------------------------------------------|----------------------------------------|

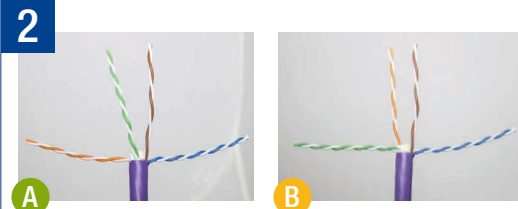
Spares and Optional Items

- | | | |
|--------------------------------------------------|------------------------------------------------------------------|------------------------------------------------------------------|
| RVUCOEW-B50
REVConnect Core Pack, Bulk | RVUICxx-B24
REVConnect Color Icon, Color xx, Bulk Pack | RVUDCxx-B24
REVConnect Dust Cover, Color xx, Bulk Pack |
|--------------------------------------------------|------------------------------------------------------------------|------------------------------------------------------------------|

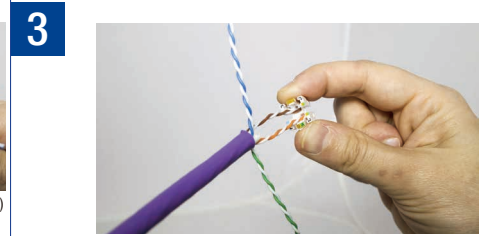


After cut, cross-web protrudes max. 0.04 in (1mm)

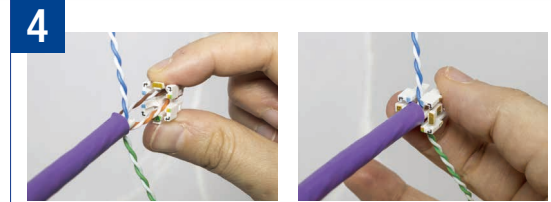
Use REVConnect Cable Preparation Tool to strip any jacketing material, split your pairs into two groups (O/G & BL/BR) and cut your crossweb. For more information, cable preparation guidelines are available on our website



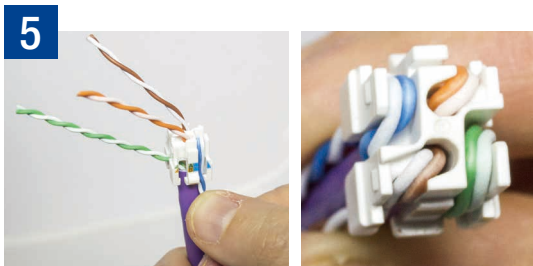
After cable is fully prepped, align your pairs in a 2 up, 2 down formation
T568A: Green and brown pair up
T568B: Orange and brown pair up



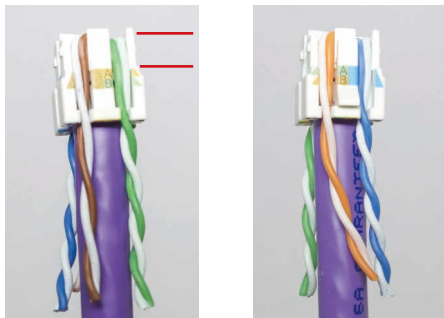
Locate the brown box on the bottom of the cable manager. Insert the brown pair and green (for T568A) or orange (for T568B) pair through the holes and begin sliding the manager down the cable



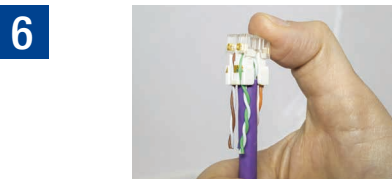
As you slide the cable manager down the wires, follow the printed arrows to turn the manager *clockwise* until the outer pairs can reside in between the outer channels. Cable manager should sit snugly on cable



Untwist pairs (do not separate) just enough for the white conductor to reside on the outside. Bend all four pairs over and down the manager and lock into their respective channels.



Pairs should lay flat (side by side) between the red lines. Verify your white conductors are all on the outside.



Align the contacts of the cap with the wired cable manager and push until it snaps down.



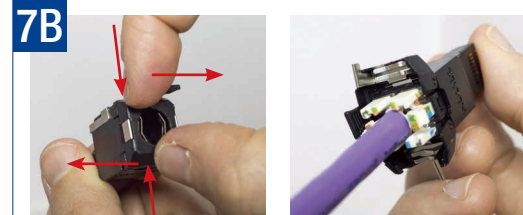
Insert the terminated core (cable manager and cap) into the tool until the middle latch returns to the center.



While holding the cable with one hand, compress the handles to complete your termination



Align the rear jack latch with the latch on the cable manager and snap on your RJ45 housing. The terminated jack is now ready for testing.



Open the rear doors of the RJ45 plug by squeezing vertically on the pins and pulling your fingers apart.

Align the rear plug latch with the small latch on the cable manager and snap on your RJ45 housing. The terminated plug is now ready for testing.

Jack Servicing



To remove, press down on the latch with a small screwdriver (or Belden release tool) and pull the cable out

Plug Servicing



To remove, open the rear doors by squeezing the upper and lower pins. Lift on the latch with a small screwdriver (or Belden release tool) and pull the cable out